



WELCOME TO THE

NMGC'S

# A TRIP TO THE MOVIES



-SUMMER CAMP-



## 7 WEEKS OF FUN!!

**Week 1-** June 3rd-7th: Pixar

**Week 2-** June 10th-14th: Superheros

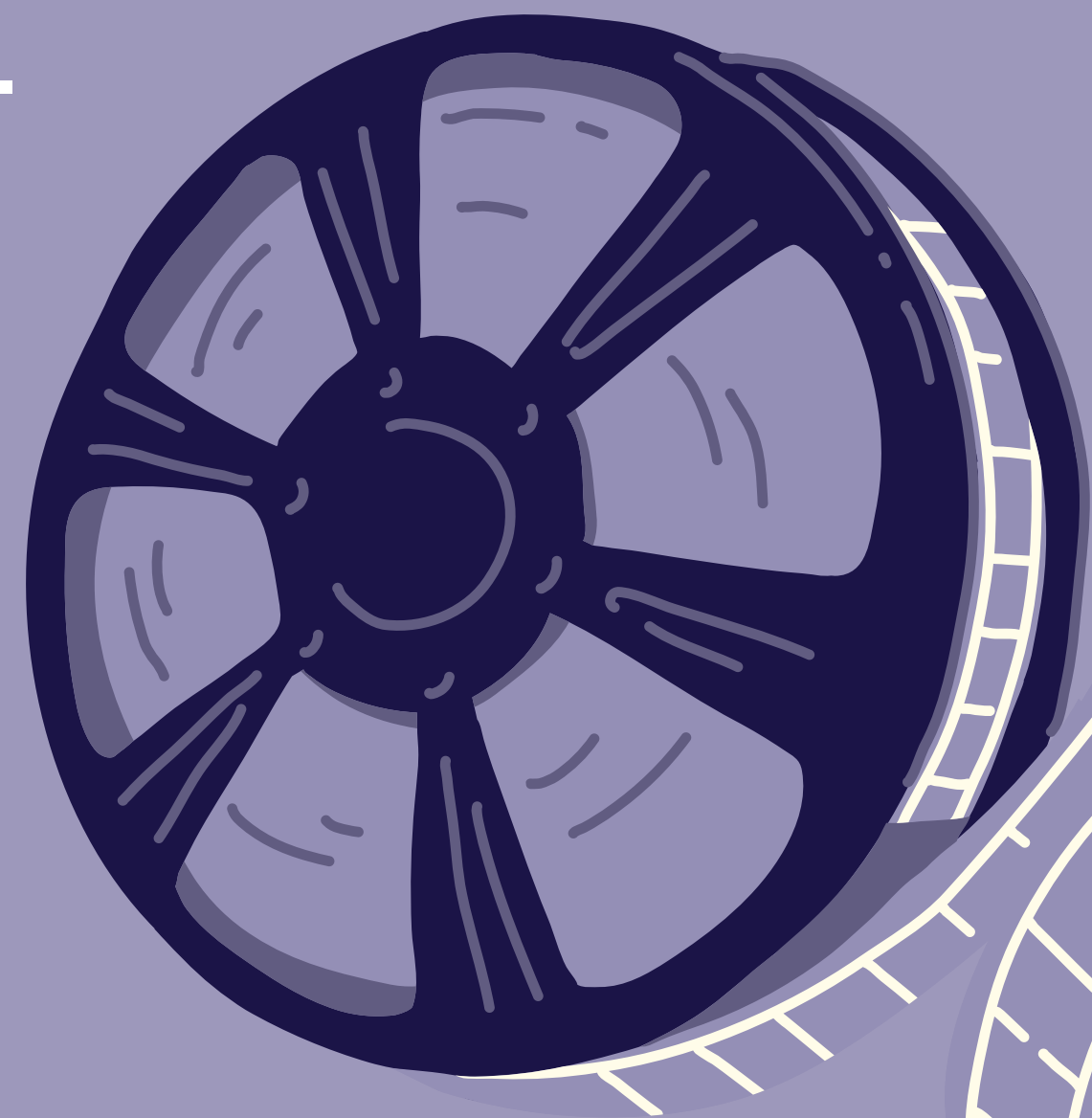
**Week 3-** June 17th-21st: Princesses

**Week 4-** June 24th-28th: Animals

**Week 5-** July 8th-July 12th: Cars

**Week 6-** July 15th-July 19th: Dinosaurs

**Week 7-** July 22nd-26th: Animated



## PRICING OPTIONS

1/2 Day - 9am to 1pm  
Full Day - 9am to 3 pm

**Option 1:** 1/2 Day, Mon-Fri - \$255

**Option 2:** 1/2 Day, MWF - \$190

**Option 3:** Full Day, Mon-Fri - \$330

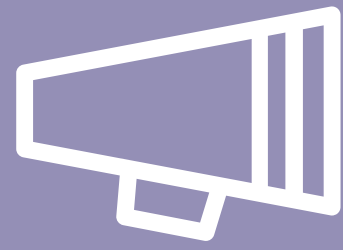
**Option 4:** Full Day, MWF - \$250

\*Drop Off (Availability Only)

1/2 Day - \$60

Full Day - \$90





# IMPORTANT

## >>> INFORMATION <<<

### What to Wear:

- Leotard or T-Shirt and Shorts

### Camp Cafe:

- Pizza
- Wednesdays (\$6) and/or Fridays (\$6)

### NO Make-Up days:

- Unfortunately, there are no make-up days or refunds for missed camp days

### Price Accommodations:

- There will be no price accommodations for campers that are dropped off late or picked up early

### What to Bring Daily:

- Snack (Full Day Campers Need 2 Snacks)
- Lunch & Water Bottle

### Crafts:

- Campers will make a new craft every day

### Switching Weeks:

- Please let us know in advance if you need to switch camp weeks to ensure we can accommodate you

### Prompt Pick-Up:

- Please be sure to pick up your camper(s) promptly at checkout time or late fee will be applied



# EXAMPLE CAMP DAY

**9:00-9:10** Check-In at Reception Desk

---

**9:10-9:20** Camp Room

---

**9:20-9:40** Game

---

**9:40-10:00** Warm-Up/Stretch

---

**10:00-10:20** Floor

---

**10:20-10:40** Trampoline

---

**10:40-11:00** Snack

---

**11:00-11:20** Craft

---

**11:20-11:40** Vault

---

**11:40-12:00** Rope

---

**12:00-12:30** Lunch

---

**12:30-12:45** Game

---

**12:45-1:00** Floor

---

**1:00-1:10** Half-Day Campers Checkout

---

**1:10-1:30** Tumble Trak

---

**1:30-1:50** Beam

---

**1:50-2:05** Snack

---

**2:05-2:20** Beam

---

**2:20-2:40** Rope

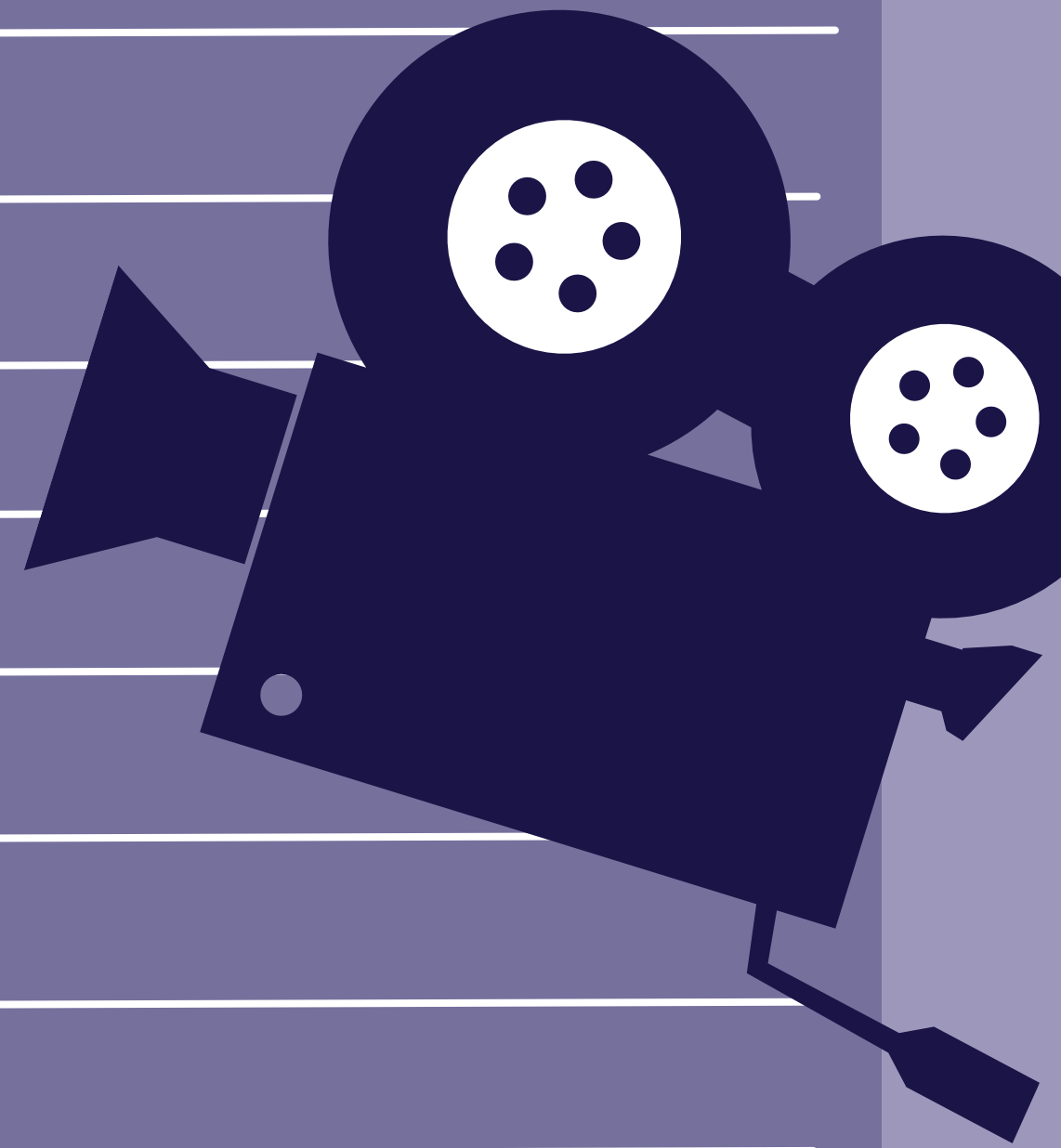
---

**2:40-3:00** Trampoline

---

**3:00** Full Day Campers Checkout

---



\*\*Please Note: We do not provide aftercare; campers must be picked up promptly at the designated checkout times or late fees will be applied